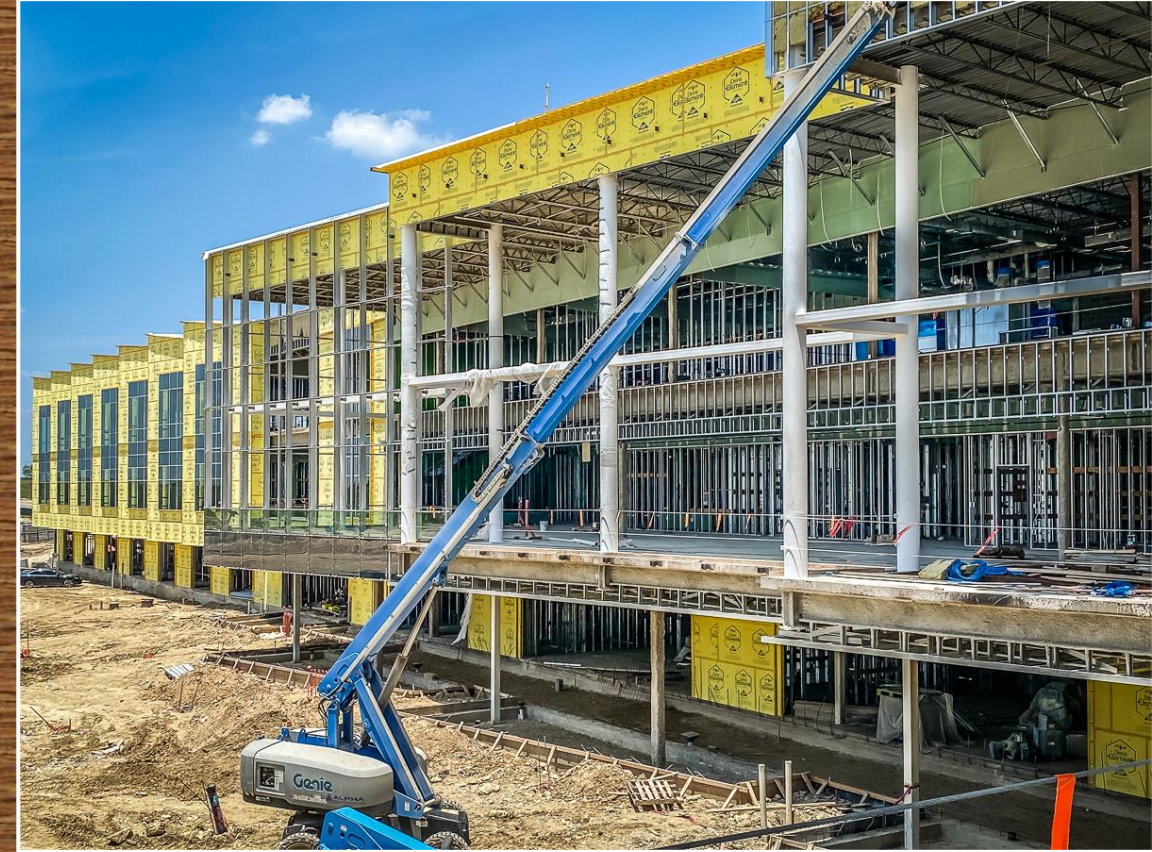
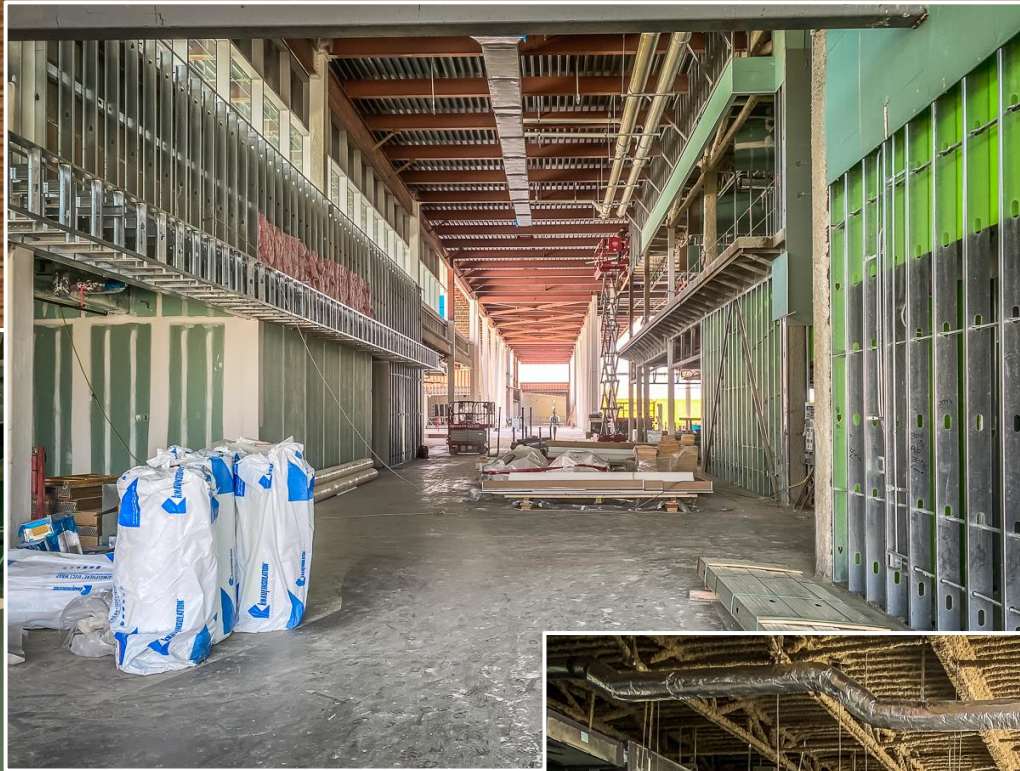
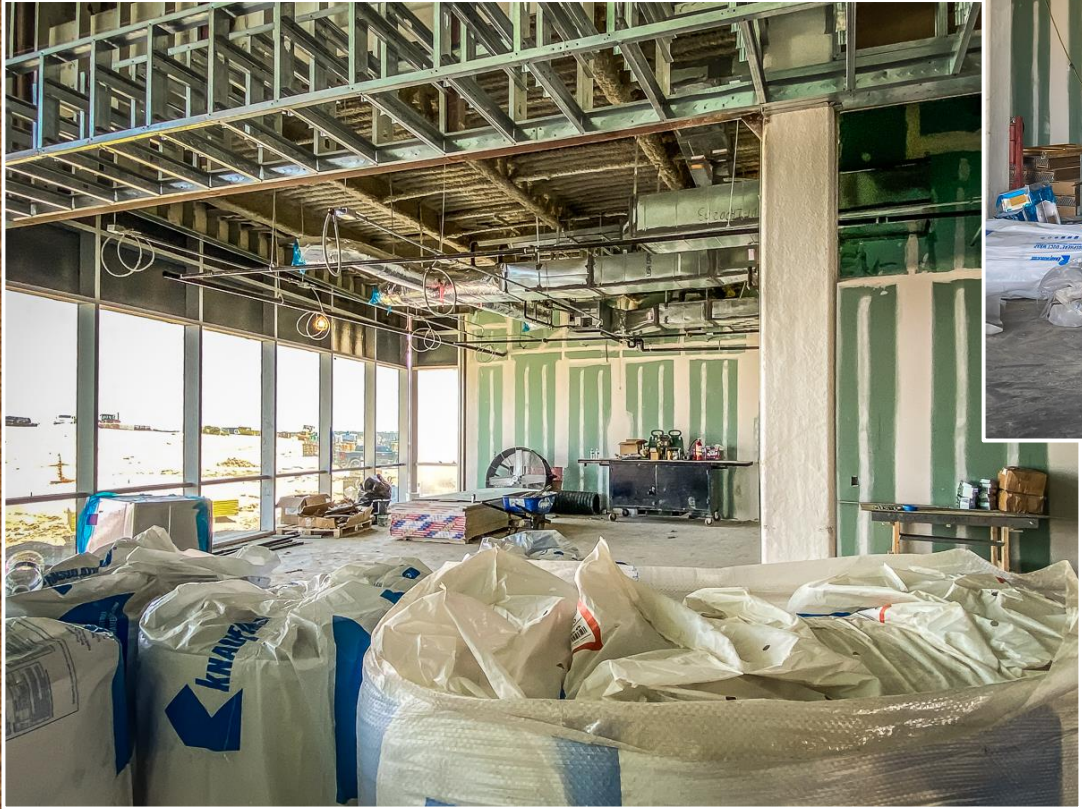




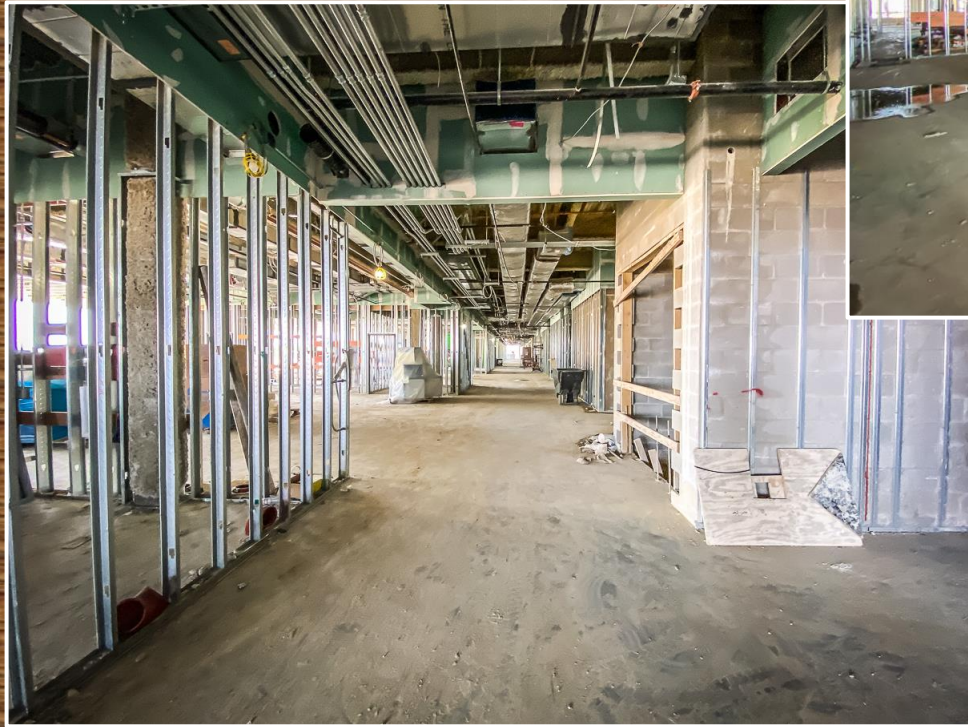
EAGLE MOUNTAIN HS



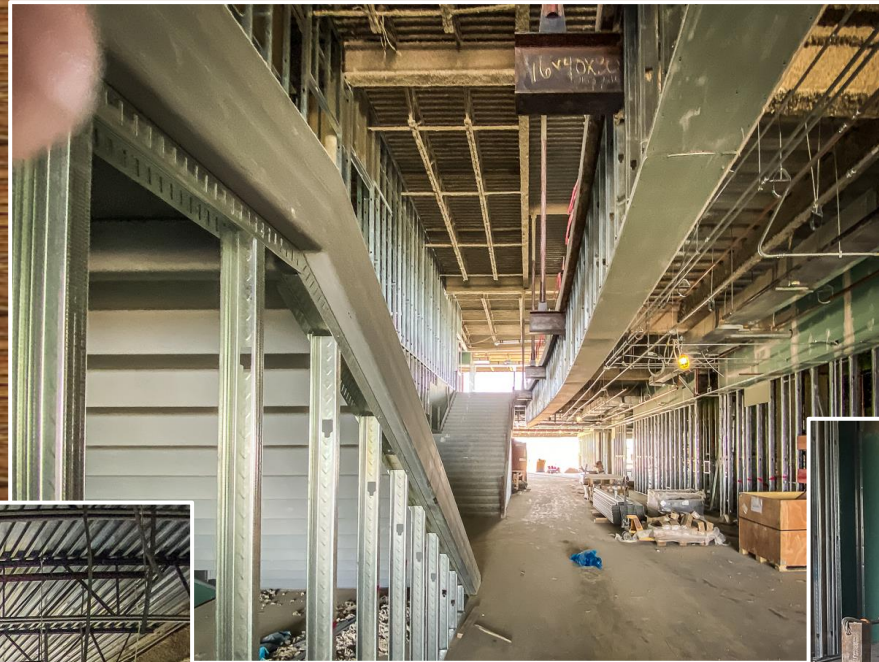
Exterior work continues on the southern portion of the main academic wing with installation of siding. CMU block installation continues on the western side next to the lecture hall.



Sheetrock and tape and bedding are complete in administration area. Main hallway looking south continues with sheetrock installation.

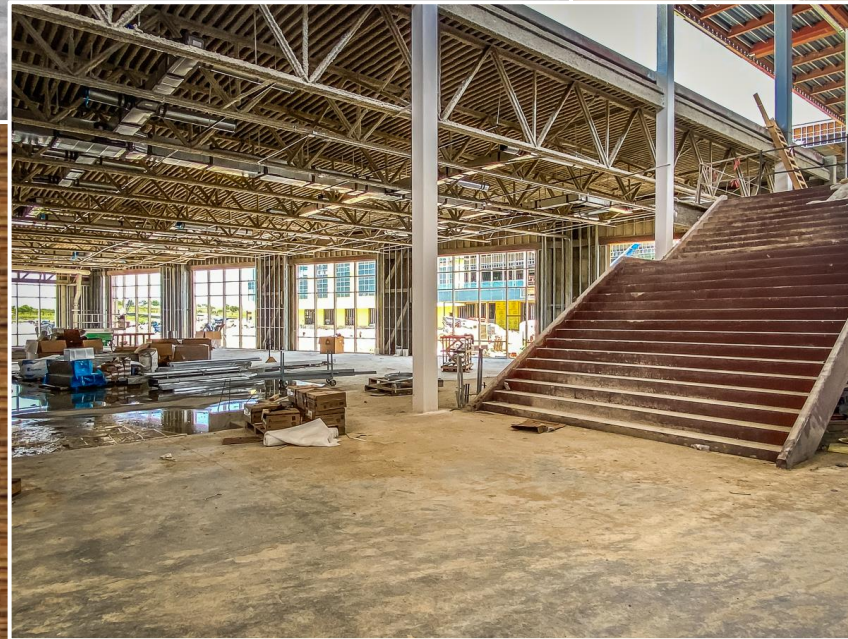
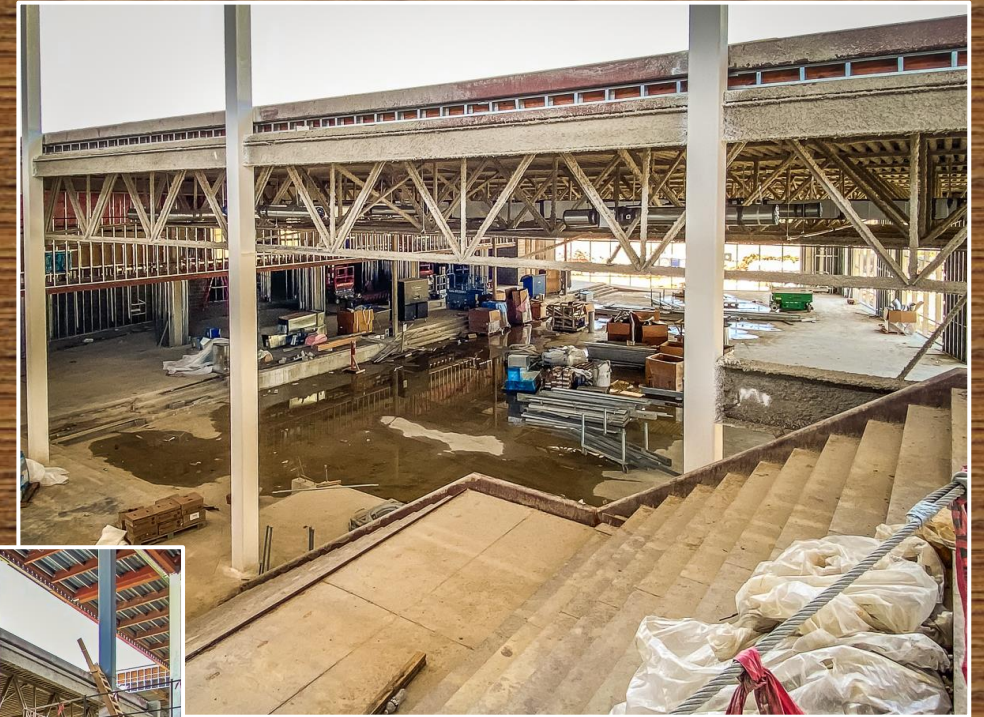
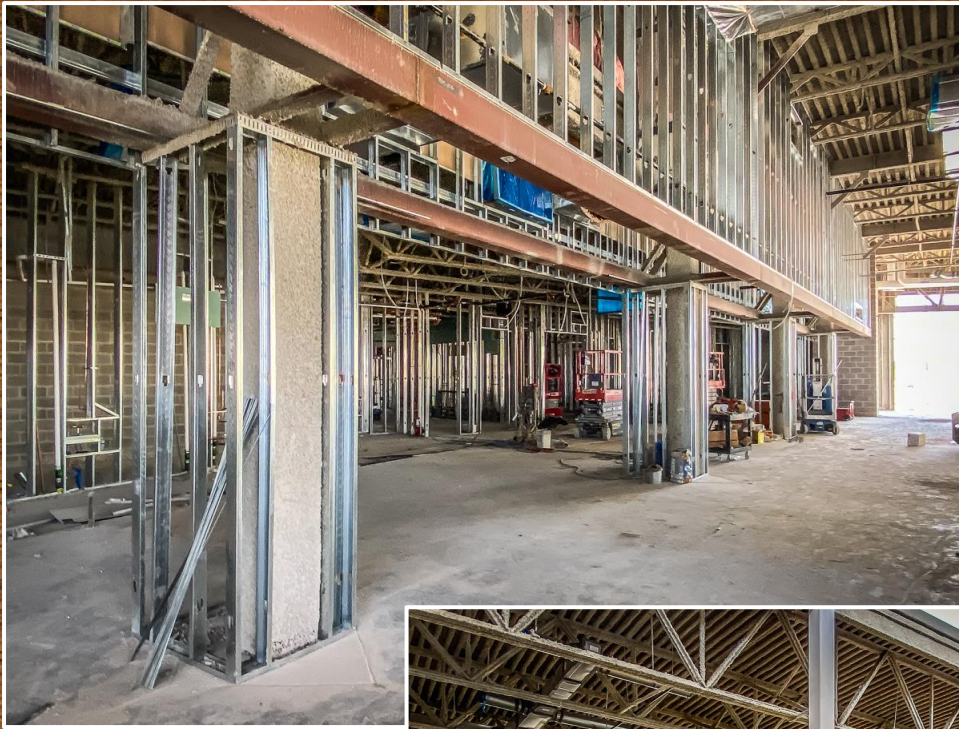


Academic areas are progressing in different stages in the 100, 200, and 300 hallways, which includes: framing, utilities, sheetrock, tape and bedding, blocking for monitors, duct work, and electrical work.

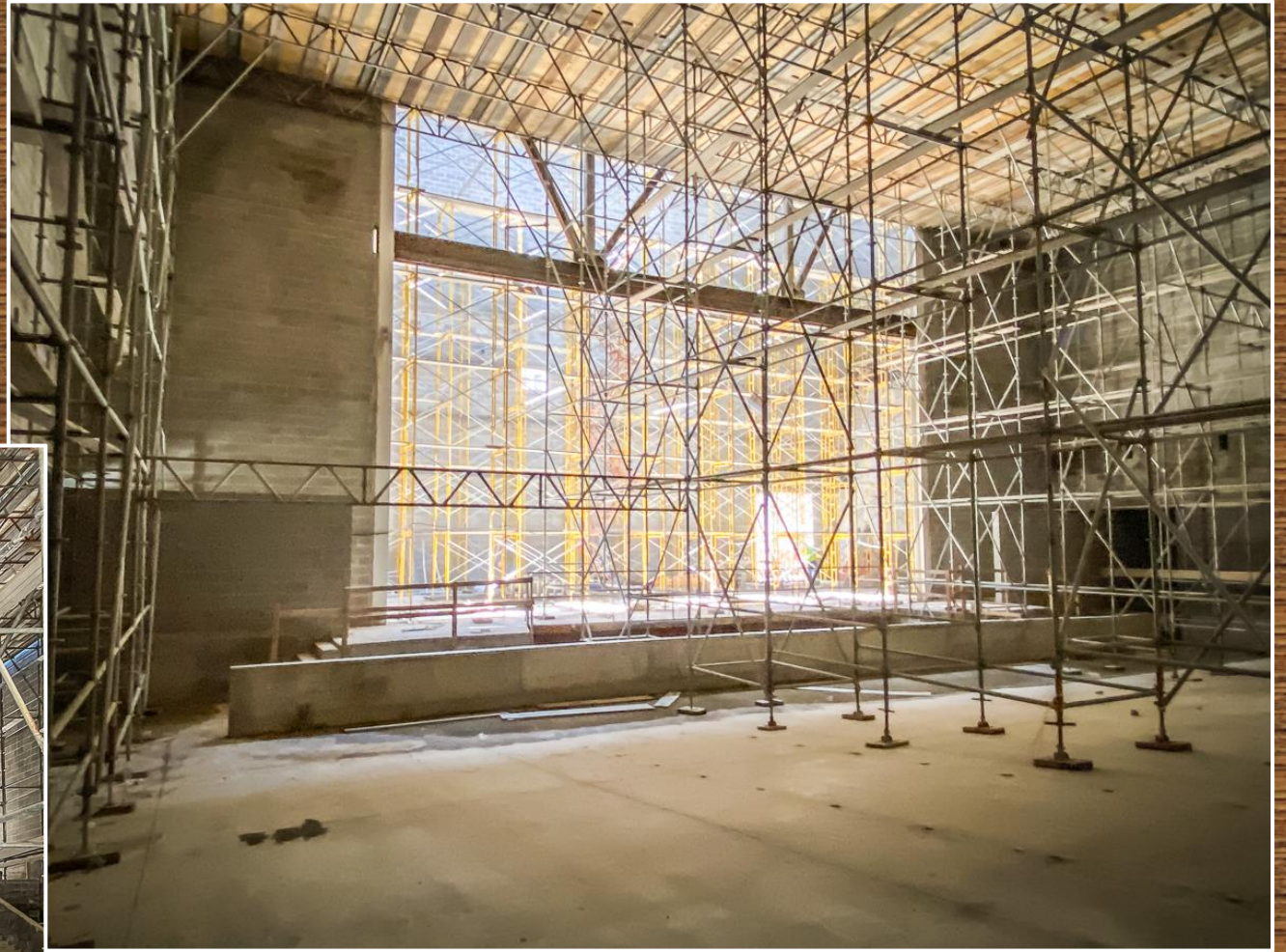




The connector bridge floor has been poured, connecting academic area to the cafeteria, PAC, and athletics area.



Framing and rough-in plumbing are progressing in the kitchen and cafeteria.



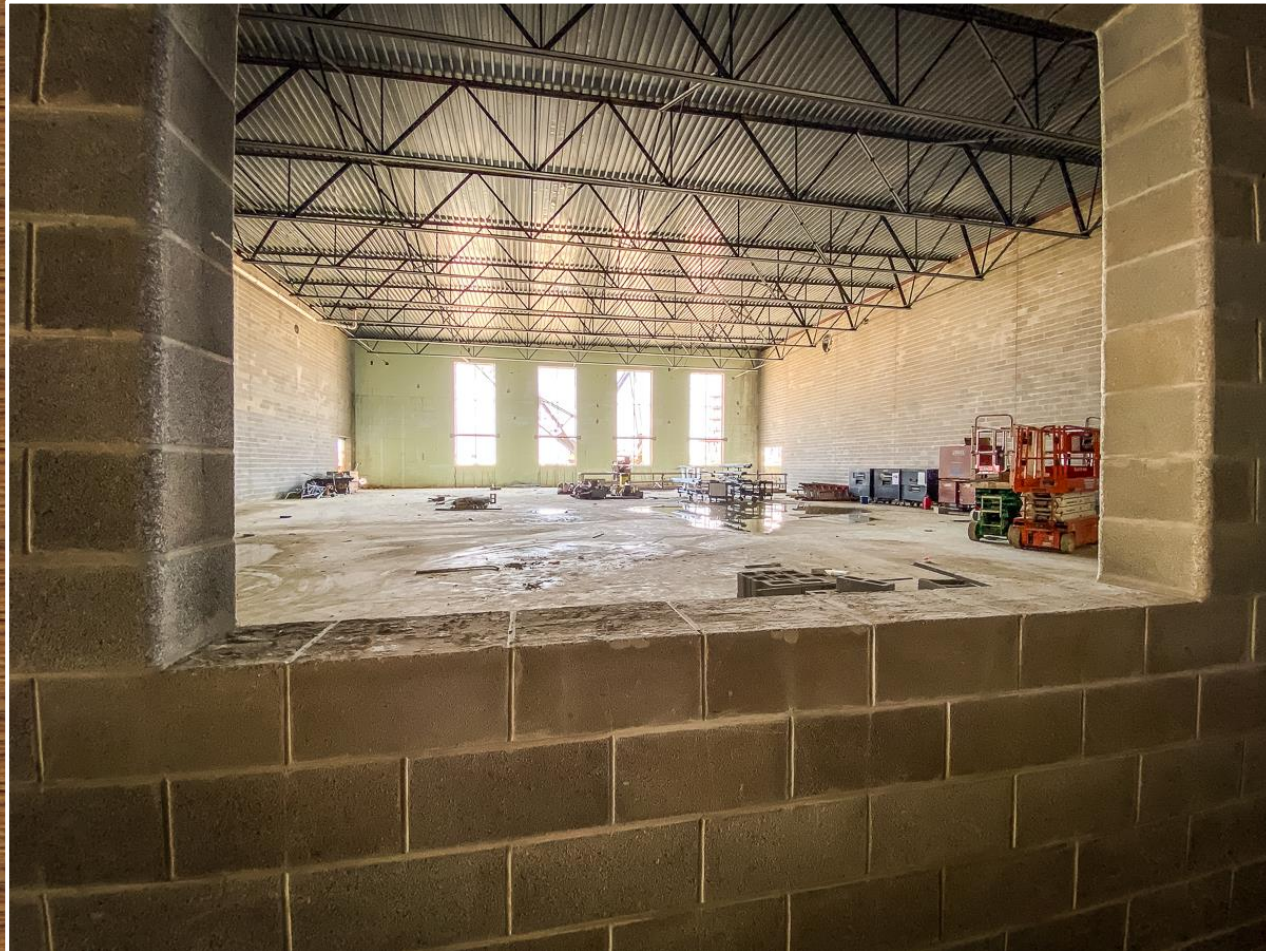
Scaffolding in the PAC interior and fly loft is being prepared to begin work on the above ceiling.



Welders continue to install steel in the entrance of the PAC .



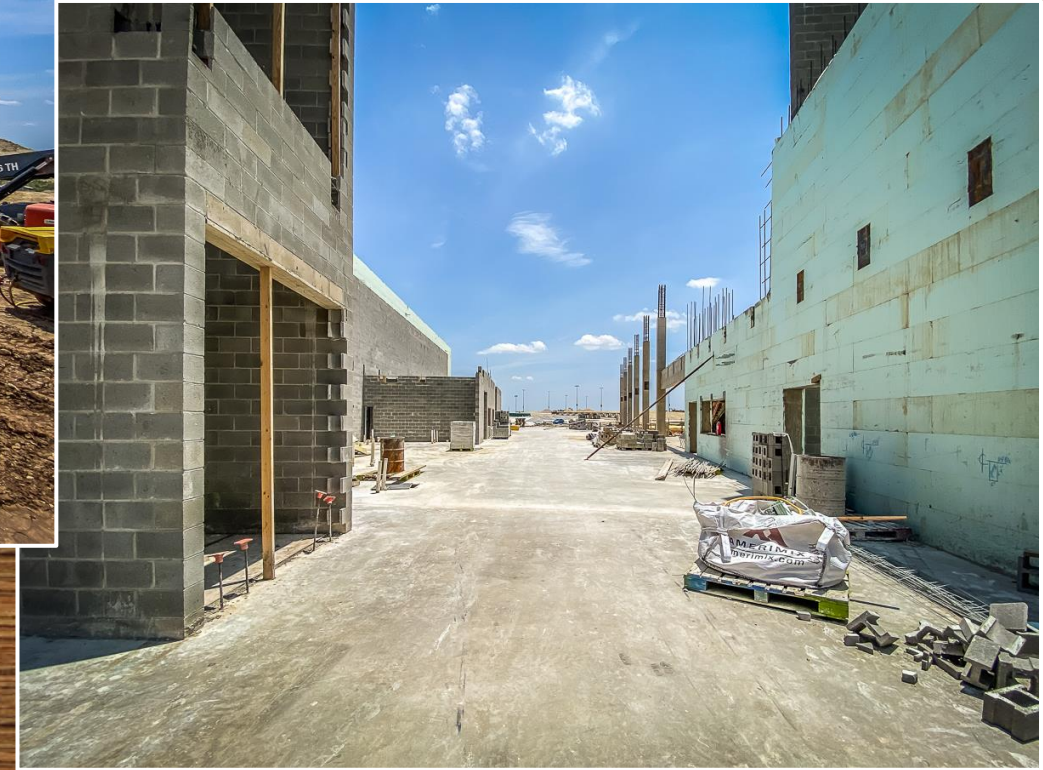
Viewing areas have been incorporated from hallways to promote transparency and natural light in the gymnastics and cheer areas.





Concrete retaining walls and ADA ramps are progressing in baseball/softball seating and dugouts.





A view of lobby area looking north and south is prepared for CMU block installation. Slab is prepared for concrete pour on the practice gym.



Steel structure and decking on the second floor continue to be installed at the field house.



Steel structure and floor decking
continue to be installed in the
press box.





Visitor parking lot in front of the main building has been poured.

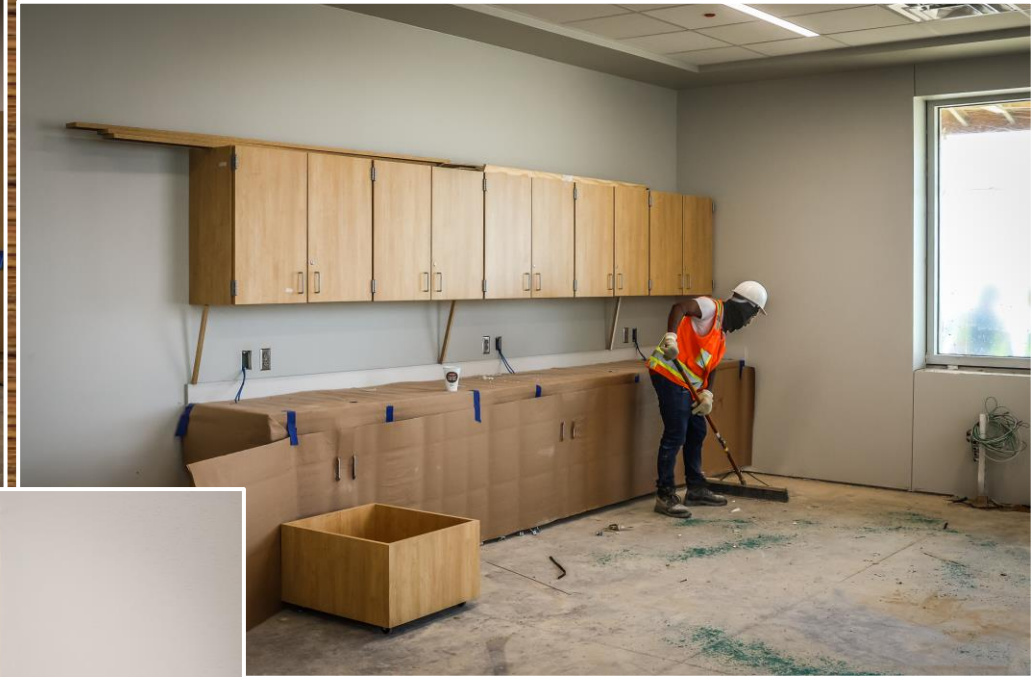


Visitor side bleacher installation has begun. CMU block is near completion in restrooms and concession stands.





ELIZABETH LOPEZ HATLEY ES

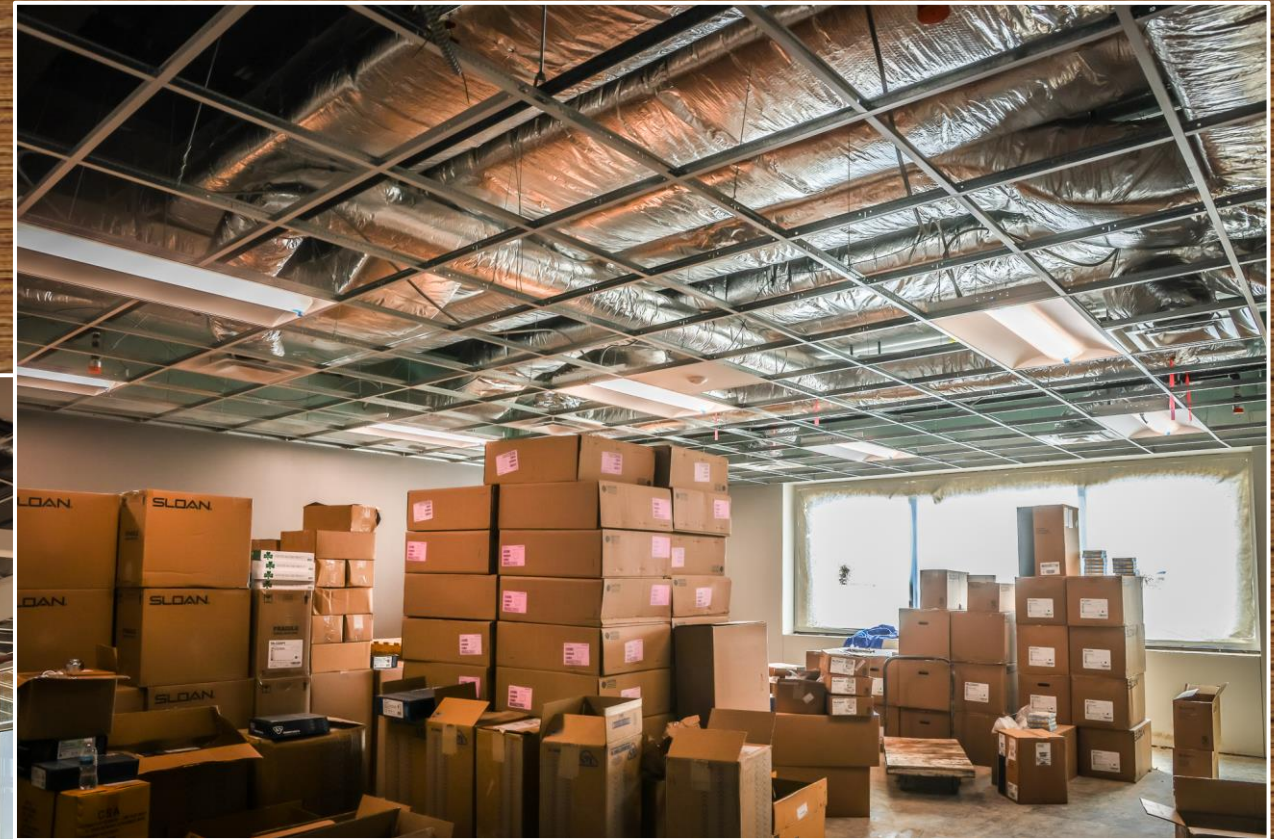
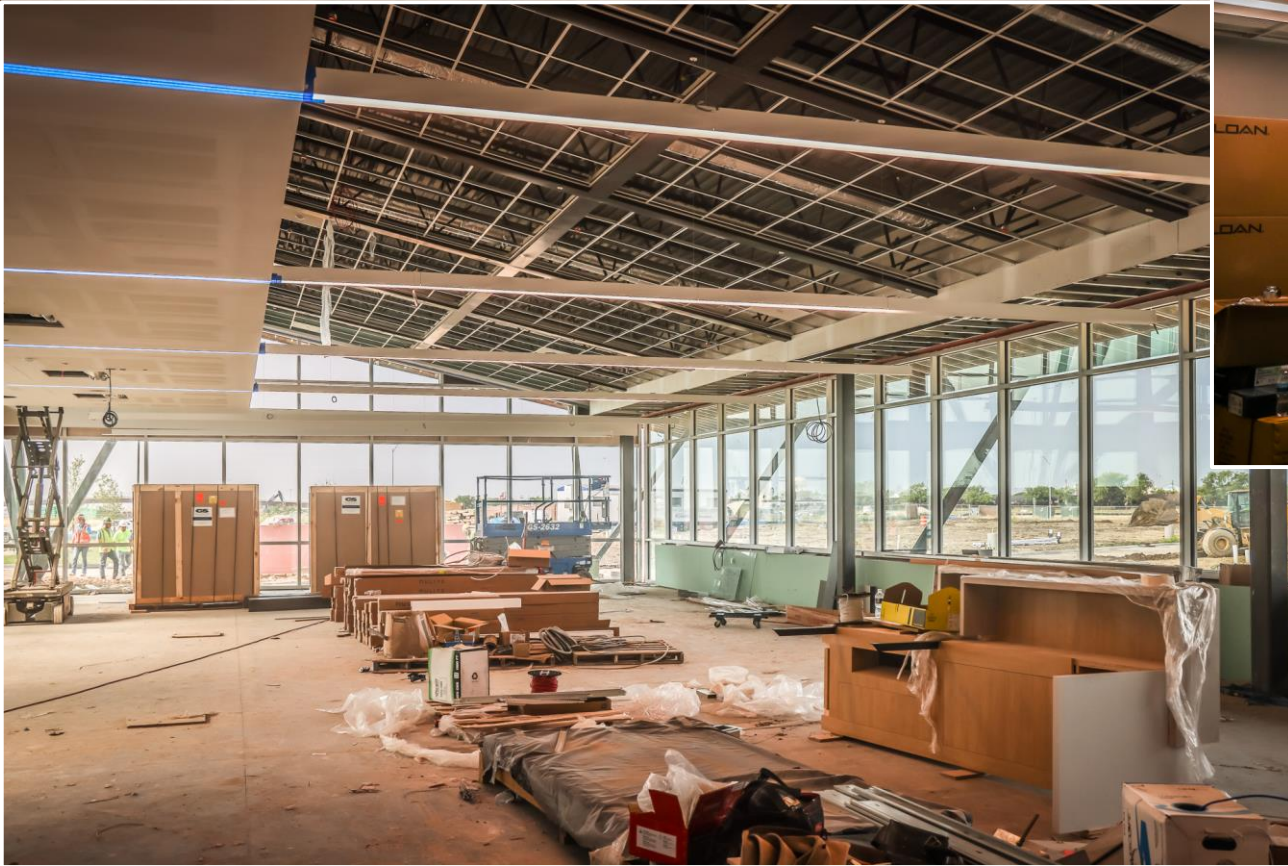


Installation of mill work
and clean-up is in progress
in the administration area.



Ceiling tile installation
and restroom floor and
wall tile are complete in
area A and B.

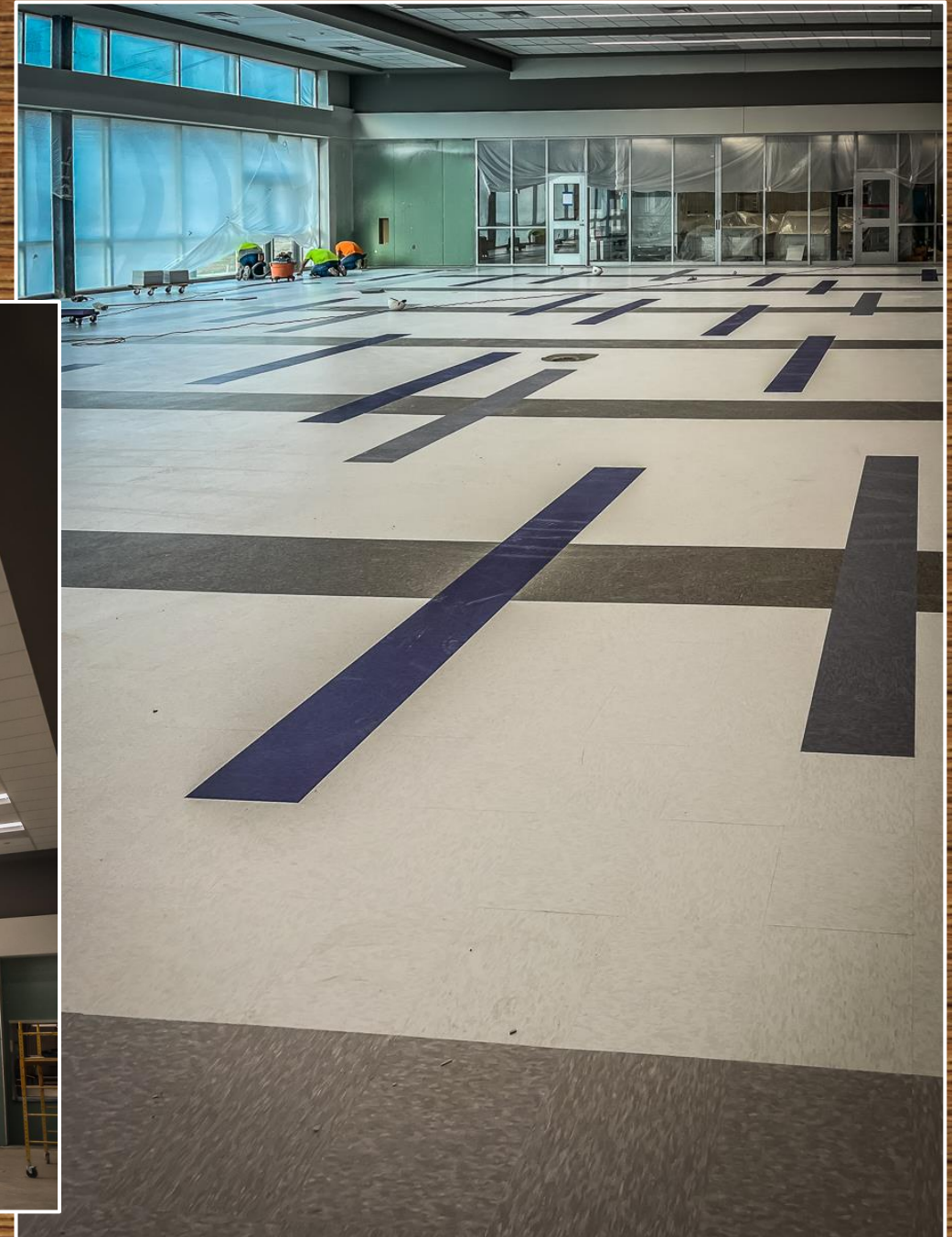


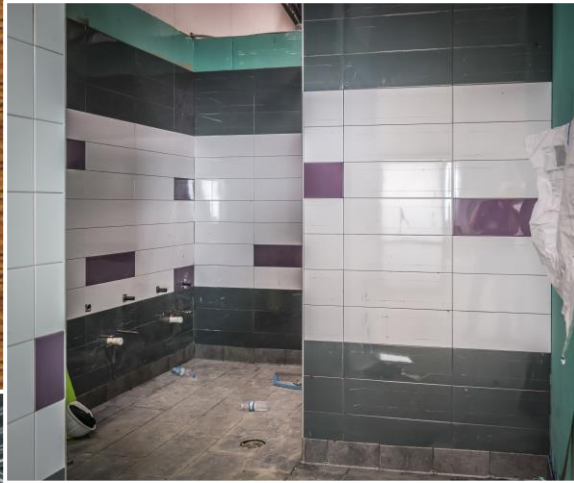


Library ceiling grid has been installed and panels have been delivered.



Ceiling grid and floor tile in cafeteria
have been installed.

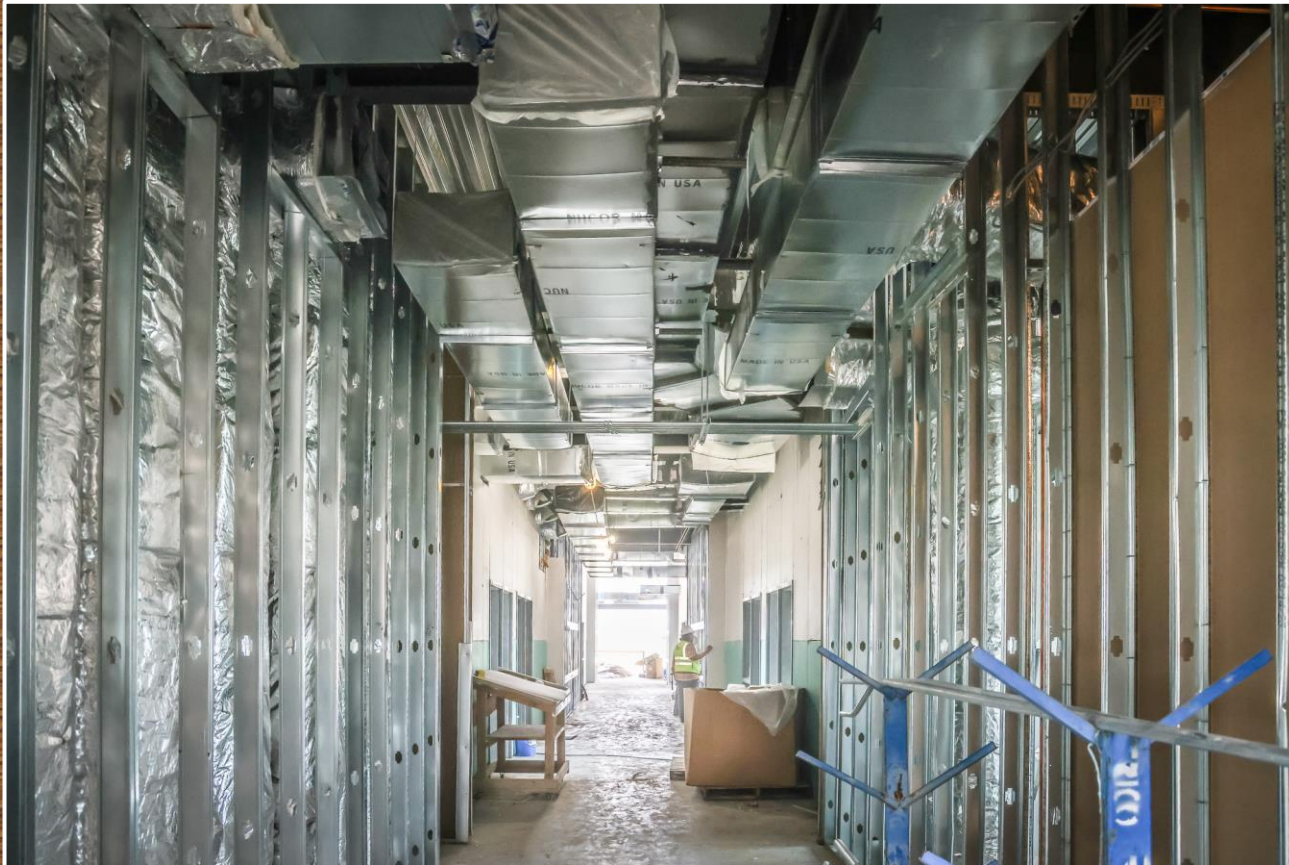




Areas C1 and D1 are ready for ceiling tile installation and millwork.



Work is progressing with tape and bedding and hallway fur downs in area C2.



**Duct work and sheetrock installation
continue in area D2.**



Connector walk way on the second floor is being prepped for glass installation. Basketball court and mow strip for playground have been poured.



Brick layers continue installation in area D on the north and west walls.



Light pole installation has started in the landscaped area in the front of the campus. The fire pump was set in the delivery yard on the east side of the building. Temporary HVAC has been set up to climatize area A and B for flooring installation.

